

THE ETHEROW WHITEFIELD BROOK

3 | 

1 | 

1 | 



KEY FEATURES:

- Two double bedrooms and one single bedroom
- Separate lounge
- Patio doors to rear garden
- Downstairs W.C.
- Integrated kitchen appliances

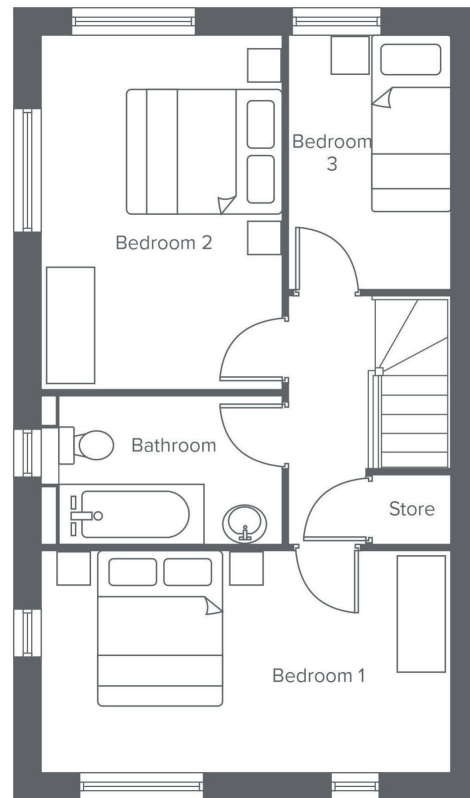
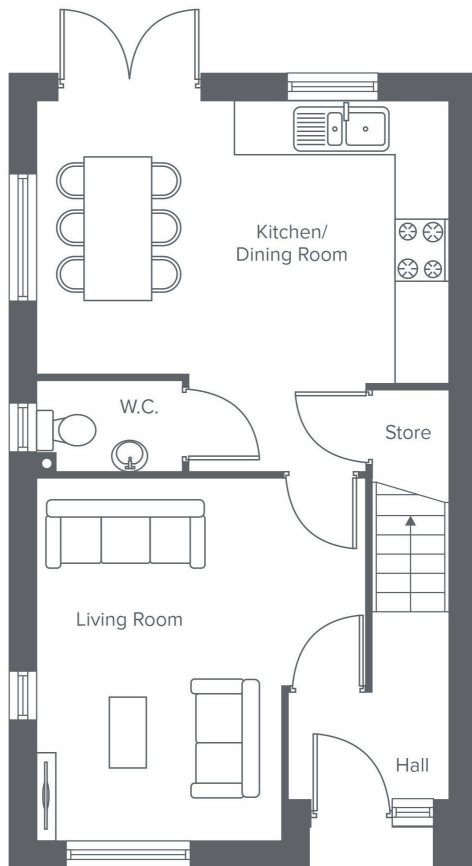
WHITEFIELD DRIVE, KIRKBY, LIVERPOOL L32 4TD
A range of bespoke two, three and four-bedroom homes.



The Etherow
Shared Ownership plots
91, 137, 192, 207, 228

Rent to Buy plots
86, 87, 102, 111, 142,
187


THE ETHEROW WHITEFIELD BROOK




Ground Floor	Metric	Imperial
Kitchen / Dining	3.3 x 4.8	10'9" x 15'8"
Living Room	4.2 x 2.8	13'9" x 9'2"
W.C.	1.0 x 1.7	3'3" x 5'6"


First Floor	Metric	Imperial
Bedroom 1	2.6 x 4.8	8'6" x 15'8"
Bedroom 2	4.2 x 2.8	13'9" x 9'2"
Bedroom 3	3.0 x 1.9	9'10" x 6'2"
Bathroom	1.7 x 2.8	5'6" x 9'2"


CONTACT OUR TEAM

 0151 601 8934

 yourhousinggroup.co.uk

 @yourhousinggroup

 @Your_Housing

 @yourhousing