

# THE CHADDOCK ELDERCOT PARK



3 | 

1 | 

1 | 



Artist's impression



Artist's impression

**Please note:** Full Brick and Half Brick/Half Render finishes are available for this house type

## KEY FEATURES

- One double bedroom & two single bedrooms
- Open plan kitchen/diner
- Separate lounge
- Integrated kitchen appliances
- Patio doors to garden
- Driveway parking



**The Chaddock**  
Shared Ownership plots

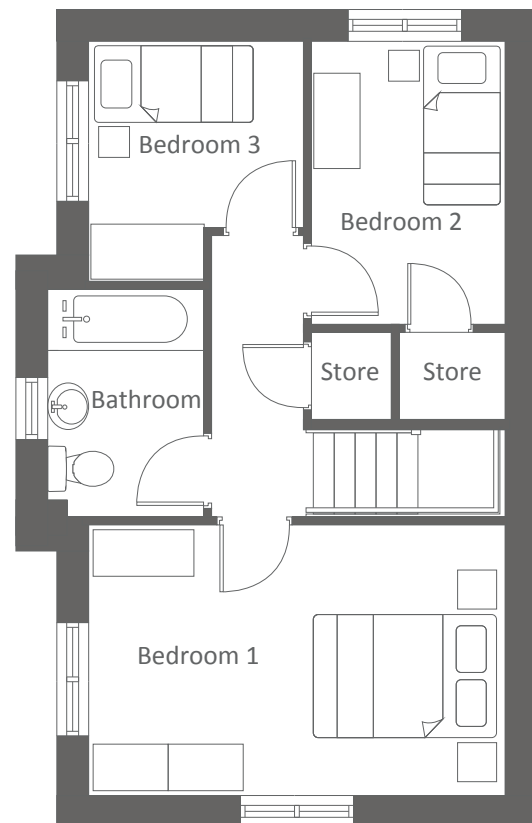
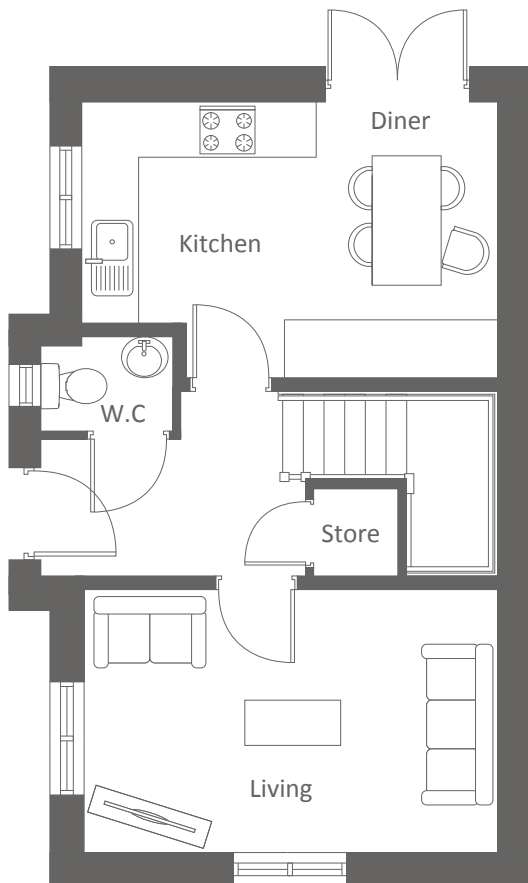
3, 10-11, 27, 29-32, 47,  
110-113, 117, 125, 130,  
144, 156, 184, 197, 201

Rent to Buy plots

63, 83, 137, 163, 222,  
230

**ELDERCOT PARK, ELDERCOT ROAD, DAUBHILL, BOLTON, BL3 4JJ**  
A range of stylish 2, 3 & 4-bedroom houses


# THE CHADDOCK ELDERCOT PARK





| Ground Floor    | Metric    | Imperial     |
|-----------------|-----------|--------------|
| Kitchen / Diner | 3.0 x 4.5 | 9'4" x 14'7" |
| Living          | 4.5 x 2.9 | 14'7" x 9'8" |
| W.C.            | 1.4 x 1.0 | 4'5" x 3'2"  |


| First Floor | Metric    | Imperial      |
|-------------|-----------|---------------|
| Bedroom 1   | 4.5 x 2.9 | 14'7" x 9'5"  |
| Bedroom 2   | 2.1 x 3.1 | 6'11" x 10'3" |
| Bedroom 3   | 2.3 x 2.6 | 7'5" x 8'5"   |
| Bathroom    | 1.7 x 2.5 | 5'5" x 8'4"   |


CONTACT OUR TEAM

 01204 895 684

 [yourhousinggroup.co.uk](http://yourhousinggroup.co.uk)

 @yourhousinggroup

 @Your\_Housing

 @yourhousing