

# The Regent St George's Row

4-bedroom home, sleeps 8



4



2



1



Artist's impression

## Key features

- Set over four storeys
- Four bedrooms
- En-suite from master bedroom
- Downstairs W.C.
- Terrace from master bedroom
- Separate kitchen
- Open plan living/dining area
- Driveway parking

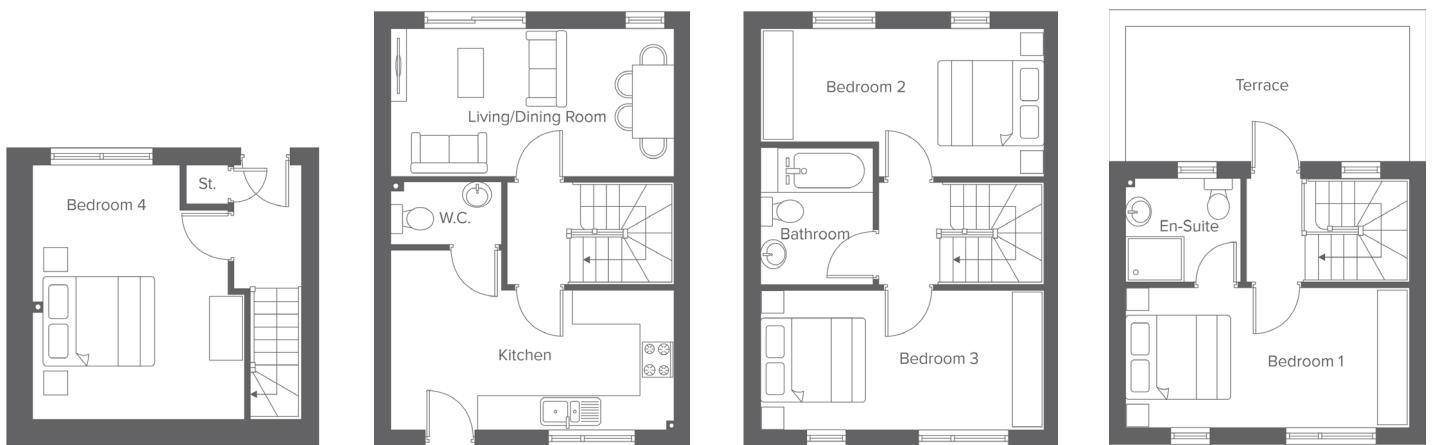


**The Regent**  
Shared Ownership plots  
A1-A12

**St Georges Row, Pool St, Bolton, BL1 2PF**  
A range of stylish 2, 3 & 4-bedroom town houses

# The Regent St George's Row

4-bedroom home, sleeps 8



Lower ground floor

Ground floor

First floor

Second floor

**Total size: 116 sqm, 1,248 sqft**

Lower Ground	Metric	Imperial
Bedroom 4	4.5 x 3.9	14'9" x 12'9"

Ground Floor	Metric	Imperial
Kitchen	2.5 x 5.0	8'2" x 16'4"
Living/Dining	2.6 x 5.0	8'6" x 16'4"
W.C.	1.1 x 1.9	3'7" x 6'2"

First Floor	Metric	Imperial
Bedroom 2	2.6 x 5.0	8'6" x 16'4"
Bedroom 3	2.4 x 5.0	7'10" x 16'4"
Bathroom	2.4 x 1.9	7'10" x 6'2"

Second Floor	Metric	Imperial
Bedroom 1	2.4 x 5.0	7'10" x 16'4"
En-Suite	1.8 x 2.0	5'10" x 6'6"

Contact our team

📞 01204 208 315

🌐 yourhousinggroup.co.uk

📷 @yourhousinggroup

🐦 @Your\_Housing

📘 @yourhousing