

# THE FLETCHER WATERSIDE POINT

2 | 

1 | 

1 | 



Artist's impression

## KEY FEATURES:

- Two bedrooms
- Open plan kitchen/diner
- Patio doors to garden
- Downstairs W.C.

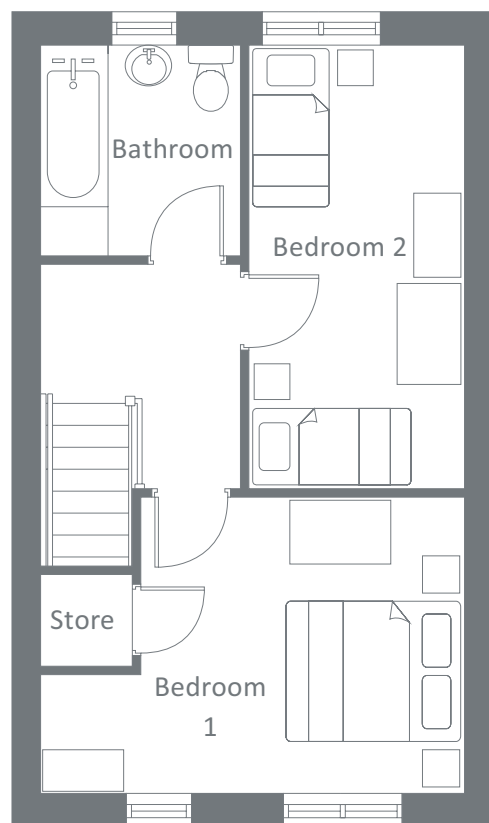
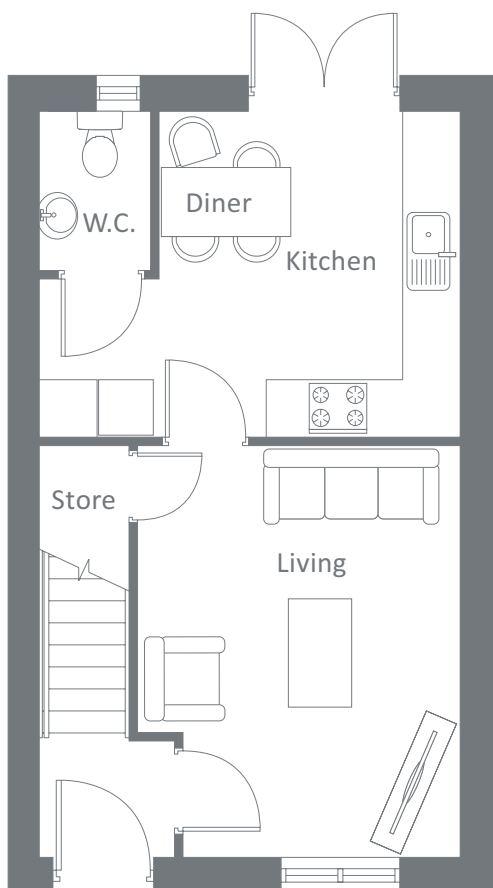
WATERSIDE POINT, WEST BRIDGEWATER STREET, LEIGH, WN7 4HB  
An exciting new canal-side development of 226 attractive new homes.



### Waterside Point

Plots 97, 98, 99, 104,  
105, 106, 108, 113,  
114, 115, 116, 124,  
127, 128, 130, 131,  
134, 135, 136, 152,  
186, 187, 188, 191,  
192, 193, 214, 215

# THE FLETCHER WATERSIDE POINT



## Ground Floor

	Metric	Imperial
Kitchen / Diner	4.2 x 3.3	13'9" x 10'9"
Living	3.1 x 4.1	10'1" x 13'4"
W.C.	1.1 x 1.7	3'7" x 5'5"

## First Floor

	Metric	Imperial
Bedroom 1	4.2 x 3.1	13'9" x 9'10"
Bedroom 2	2.0 x 4.3	6'6" x 14'3"
Bathroom	2.1 x 2.2	6'11" x 7'4"

CONTACT OUR TEAM

📞 01942 419148

🌐 [yourhousinggroup.co.uk](http://yourhousinggroup.co.uk)

📷 @yourhousinggroup

🐦 @Your\_Housing

📘 @yourhousing