

THE CHADDOCK WATERSIDE POINT

3



1



1



Artist's impression

KEY FEATURES:

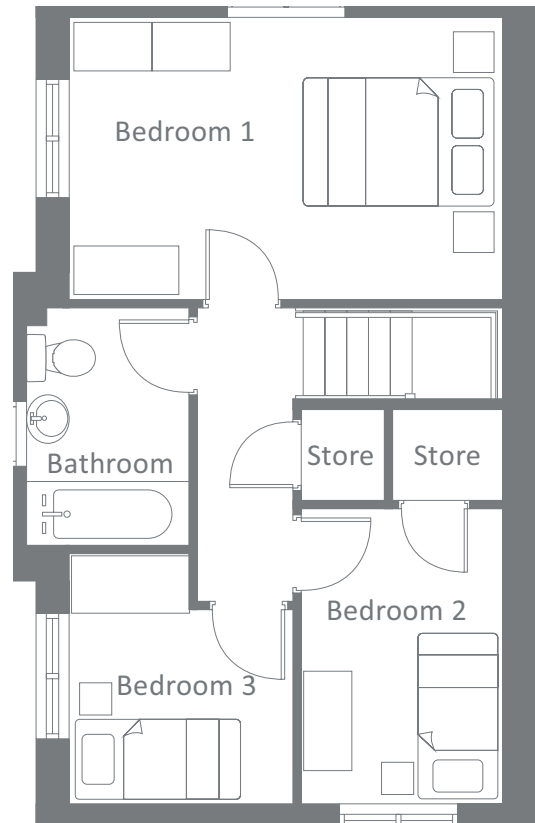
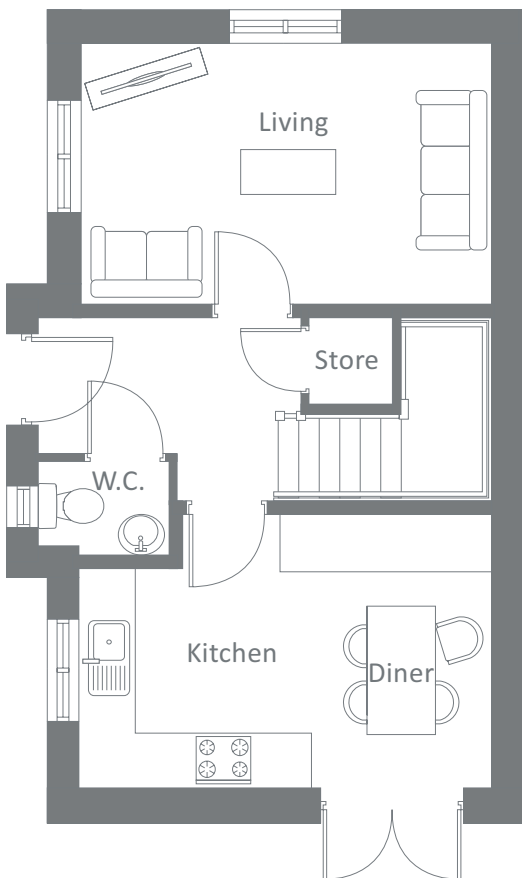
- One double & two single bedrooms
- Open-plan kitchen / diner
- Separate lounge
- Patio doors to garden

Waterside Point

Plots 3, 28, 31, 34, 37, 38, 42, 45, 48, 50, 51, 53, 56, 62, 64, 65, 66, 67, 69, 81, 83, 84, 87, 88, 93, 107, 123, 137, 143, 151, 157, 220, 223, 226

WATERSIDE POINT, WEST BRIDGEWATER STREET, LEIGH, WN7 4HB
An exciting new canal-side development of 226 attractive new homes.

THE CHADDOCK WATERSIDE POINT



Ground Floor

	Metric	Imperial
Kitchen / Diner	3.0 x 4.5	9'4" x 14'7"
Living	4.5 x 2.9	14'7" x 9'8"
W.C.	1.4 x 1.0	4'5" x 3'2"

First Floor

	Metric	Imperial
Bedroom 1	4.5 x 2.9	14'7" x 9'5"
Bedroom 2	2.1 x 3.1	6'11" x 10'3"
Bedroom 3	2.3 x 2.6	7'5" x 8'5"
Bathroom	1.7 x 2.5	5'5" x 8'4"

CONTACT OUR TEAM

📞 01942 419148

🌐 yourhousinggroup.co.uk

📷 @yourhousinggroup

🐦 @Your_Housing

📘 @yourhousing